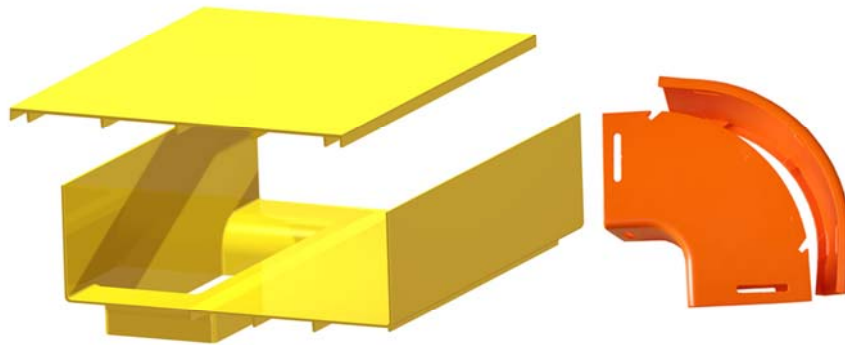


FOR IMMEDIATE RELEASE

Leviton Expands Fiber Raceway System Offering



April 26, 2007 – Bothell, Wa — Leviton Voice & Data is pleased to announce several new additions to their Fiber Raceway product line that will allow customers to tailor the Fiber Raceway system to their specific application.

Our Fiber Raceway System is now available in two new colors: black and orange, has several new accessories, and has expanded mounting hardware options. Customers may now specify sizes and colors for Fiber Raceway Systems: 2" x 2", 2" x 4", 4" x 4", 4" x 8" or 4" x 12" – in yellow, gray, orange, or black.

A new Outlet Trumpet Fitting for the 4" x 12" system allows fiber cabling to exit easily from the end of raceway and down to the cabinet or rack. A new In-line Vertical Drop Fitting for the 4" x 12" system lets fiber cabling drop directly below the raceway, while still allowing free flow for ongoing fibers. A new End Support Fitting provides a way to permanently attach the 4" x 4" raceway transitioning from the overhead mounting system down to the top of a cabinet.

The mounting hardware now available for the Fiber Raceway System includes a new Ladder Rack Mount Kit designed for the 4", 8", and 12" wide systems to attach on to 1 ½" or 2" ladder racks. In addition, a new Heavy Duty Ladder Rack Mount Kit is designed to support heavier cables installed in the raceway, such as copper cabling. Both of these new mounting kits will allow customers to install the Leviton Fiber Raceway System on top of existing ladder racks in order to maximize space already allocated for their cabling patchways.

For more information on this system, please contact Leviton Voice & Data at 800-722-2082.